



● Features

- ✓ IP67 waterproof level
- ✓ Working temp -30~+70°C (refer to output derating curve)
- ✓ Protection: Short circuit /Over load/ Over voltage
- ✓ 100% pass high temperature aging test
- ✓ 3 years warranty



● Applications

LED-based decorative/architectural lighting, LED stage, theater lighting and LED electronic displays

● Reference standard

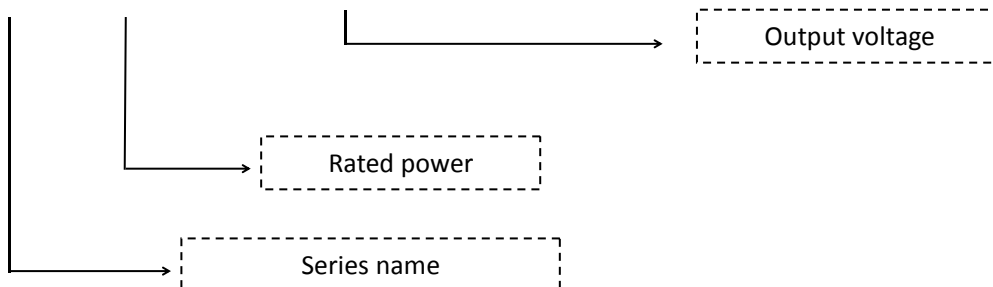
EN61547\EN61000-4-2,3,4,5,6,8,11\ GB17625.1\EN61000-3-2\EN61000-3-3\ EN55015\GB17743\ GB19150.1\14/EN61347-1, -2-13\EN62384\UL8750

● Product description

DPV-150 series is 150W IP67 plastic case LED driver, input voltage range: 176~264VAC, output voltage 12V, 15V, 24V, 36V, 48V and etc, which is suitable for LED-based decorative/architectural lighting, LED stage, theater lighting and LED electronic displays. Plastic case waterproof design, ultra-high efficiency, compact case, good heat dissipation, to ensure the long-term stable work of this series of products.

● Product name

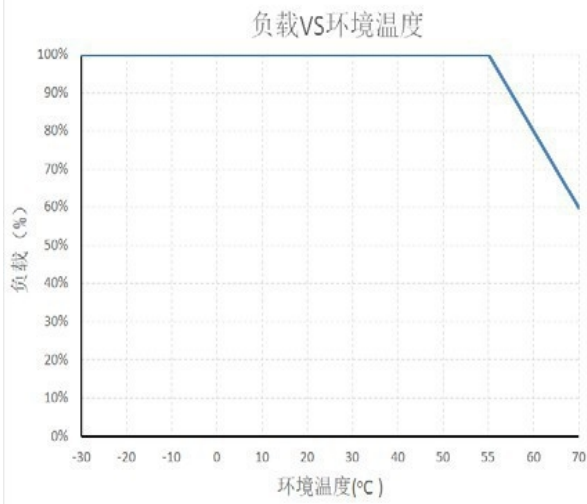
DPV - 150 - 5/12/15/24/36/48



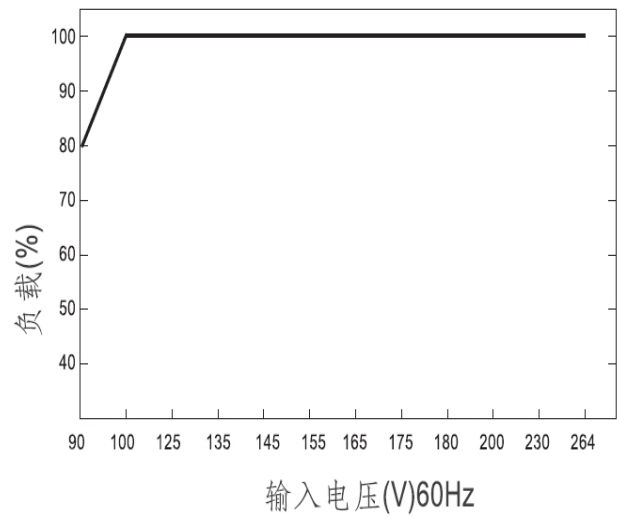
● General Specification

Model		DPV-150-12	DPV-150-15	DPV-150-24	DPV-150-36	DPV-150-48
Input	Voltage range	176~264VAC				
	Current	230VAC/1.4A				
	Efficiency（Typ）	≥92.5%	≥92.5%	≥92.5%	≥92.5%	≥92.5%
	Frequency range	47~63HZ				
	Leakage current	<1mA/240VAC				
	Inrush current	Cold start 60A/230VAC				
	Output	DC voltage	12V	15V	24V	36V
Rated current		12.5A	10A	6.25A	4.16A	3.13A
Power		150W	150W	150W	149.76W	150.24W
Voltage adjust		/	/	/	/	/
Ripple and noise		400mVp-p	500mVp-p	600mVp-p	700mVp-p	800mVp-p
Set up,rise time time		2000ms,50ms/（230VAC）load 100%				
Hold up time		16ms/（230VAC）load 100%				
Line regulation		±1.0%	±1.0%	±1.0%	±1.0%	±1.0%
Load regulation		±2.0%	±2.0%	±2.0%	±2.0%	±2.0%
Output Voltage Accuracy		±3.0%	±3.0%	±3.0%	±3.0%	±3.0%
EMC	Electromagnetic tolerance	Design refer to EN61547;EN55035:2017 : (surge immunity Line-Line 2KV)EN61000-4-2,3,4,5,6,8,11;				
	Harmonic current	Design refer to GB17625.1;EN61000-3-2 Class A, EN61000-3-3				
	EMI	Design refer to EN55015, GB17743 ,EN55032:2015 Class B				
Safety	Safety specification	Design refer to GB19150.1,14/EN61347-1, -2-13/EN62384 /UL8750/IP67				
	Withstand voltage	I/P-O/P:3KVac/10mA, testing time:1min				
	Insulation impedance	I/P-O/P:100M ohms;				
Protections	Over voltage	Limited voltage,130%-160% of rated voltage				
	Over load	115%~180% rated load,recovers automatically after fault condition is removed				
	Short circuit	recovers automatically after fault condition is removed				
Environment	Working temperature and humidity	-30~70℃ 20%~95%RH no condensing （refer to derating curve）				
	Storage temperature and humidity	-40℃~85℃; 10%~95%RH no condensing				
	Vibration	Frequency range 10 ~ 500Hz,acceleration 5G,Each sweep cycle 10min.6 sweep cycles along X, Y and Z axes				
	Shock	Acceleration 20G,Duration 11ms,3 shocks along X, Y and Z axes				
	Altitude	2000mtrs （for every 100 m higher than 2000 m, the ambient temperature decreases by 0.6℃）				
Reliability	MTBF	25℃:250000Hrs, MIL-217 Method				
Others	Size	190×52×37 mm（L×W×H）				
	Packing	0.24kgs/pc,30 pcs/ctn,20.65kgs/ctn				
	Cooling mode	<input checked="" type="checkbox"/> Free air cooling <input type="checkbox"/> With Fan				
Remarks	❖ In order to extend the lifetime, it is recommended to configure the load more than 20% of the remaining allowance. For example: the power of the device requires 100W, then use the power of not less than 120W. ❖ Ripple test method at 20MHz of bandwidth by using a 12” twisted pair-wire terminated with a 0.1uf & 47uf parallel capacitor. ❖ All parameters NOT specially mentioned are measured at 230VAC input, rated load and 25℃ of ambient temperature. ❖ The power supply is considered as a component that will be operated in combination with final equipment. All EMC tests are carried out by installing the sample on the metal plate. The power supply should be combined with the terminal equipment for EMC test.					

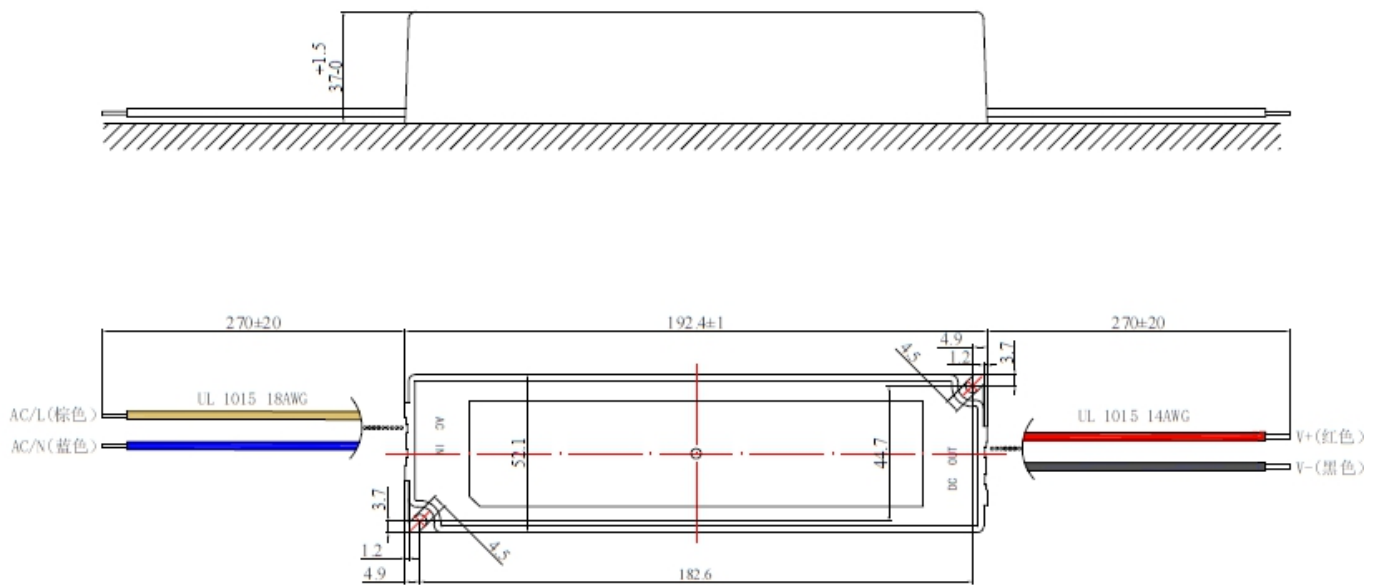
● Load and temperature curve



● Static characteristic curve



● Install drawing



● Use instructions:

- 1、 please follow the installation instructions when use the power supply。
- 2、 Before power on test run after installation, please check and proofread the wiring on each terminal, make sure that the input and output, AC and DC, positive and negative, voltage and current values are correct, prevent the occurrence of wrong connection, and avoid damaging the power supply and user equipment。
- 3、 Before power on, please use a multimeter to measure whether the live wire, zero wire and ground wire are short circuited, and whether the output terminal is short circuited; it is better to start without load when power on。
- 4、 Do not exceed the nominal value of the power supply when using, so as not to affect the reliability of the product. If you need to change the output parameters of the power supply, please consult our technical department before using.
- 5、 In order to ensure the safety of use and reduce interference, please ensure that the grounding terminal is reliably grounded (ground wire please thicker than AWG18#) 。
- 6、 If the power supply fails, please do not repair it without permission. Please contact our customer service department as soon as possible, customer service line: 86-519-85215050。

● Transport、 storage:

1、 Transport:

The package is suitable for shipping by automobiles, ships, airs, trains, etc. During transportation, it shall be rain proof, loaded and unloaded gently。

2、 Storage:

When the product is not in use, it shall be placed in the packing box. The storage environment temperature and relative humidity shall meet the requirements of the product. No corrosive gas or product in the warehouse, and no strong mechanical vibration, impact and strong magnetic field. The packing box shall be padded at least 20cm above the ground, and not be soaked. If the storage time is too long (more than 1 year), it shall be rechecked by professionals before use.