
Product Specifications

Model Number: JM-TOUCH-MB06

Product Name: CCT Touch Panel LED Controller



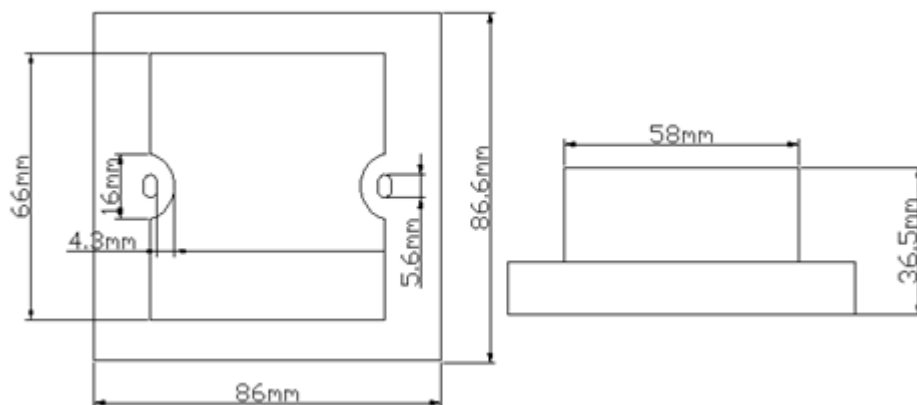
Product Description:

Touch panel dimmer controller is a new high-end controller which newly developed by our company. It adopts glass panel design with a beautiful and fashionable appearance. It adopts high precision capacitance touch control chip to increase the touch sensitivity and reduces mistake trigger. It is used for controlling a variety of lamp whose source of light is LED. For instance, point source of light, flexible light strip, wall washer lamp, panel lights etc., it has many advantages such as convenient to connect, easy to use and others. It also can realize cold white, warm white, pure white light Color-temperature and other effects of lighting change.

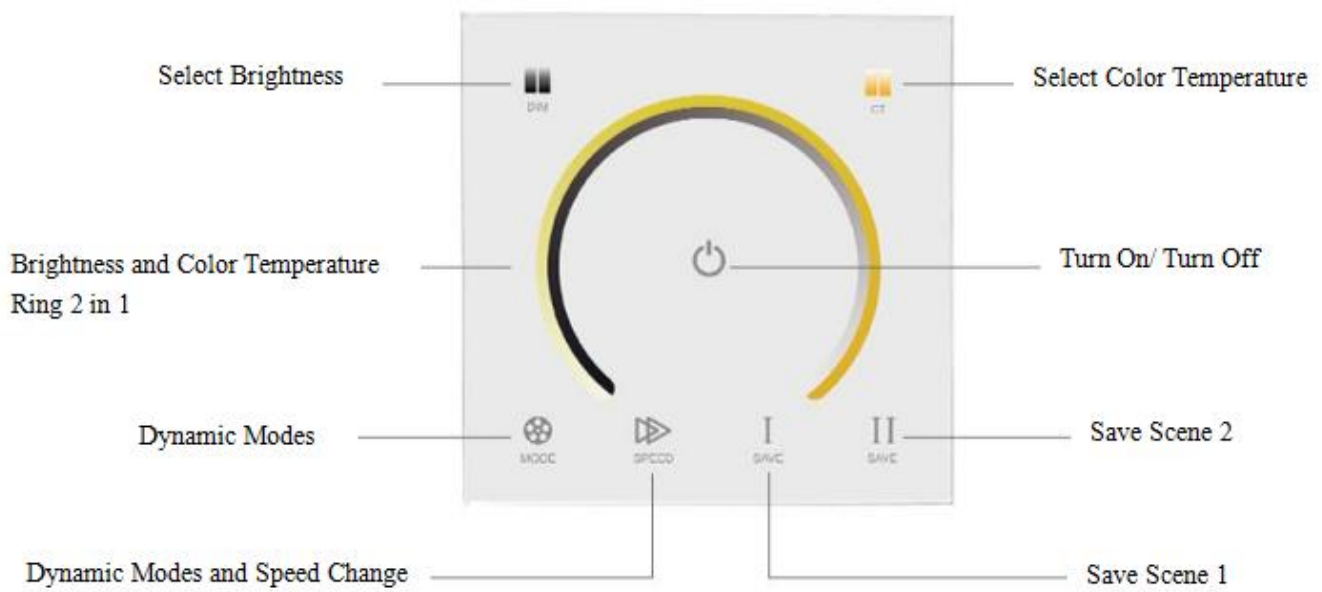
Technical Parameters:

-
- Working Temperature: -20-60℃
 - Supply Voltage: DC12~24V
 - Output: 2 Channels
 - Connection Mode: Common Anode
 - External Dimension: L86XW86XH36 mm
 - Packing Size: L115XW110XH56 mm
 - Net weight: 130g
 - Gross Weight: 187g
 - Static Power Consumption: <1W
 - Output Current: <6A(each channel)
 - Output Power: 12V<144W, 24V<288W

External Dimension



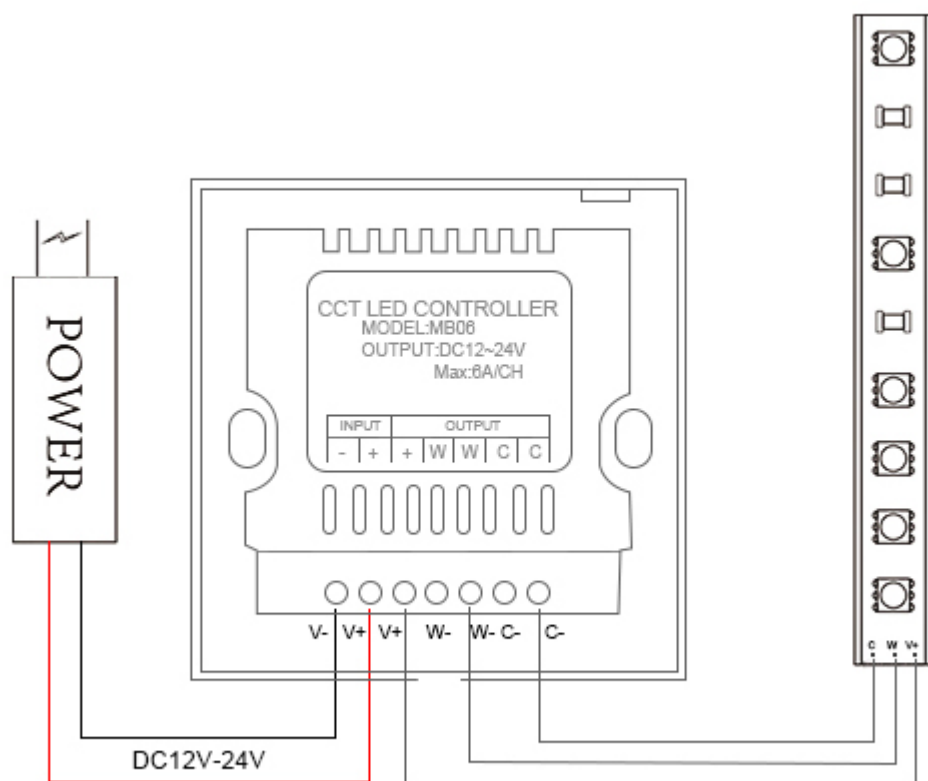
Direction for Use:



3、standard change is shown in the below table:

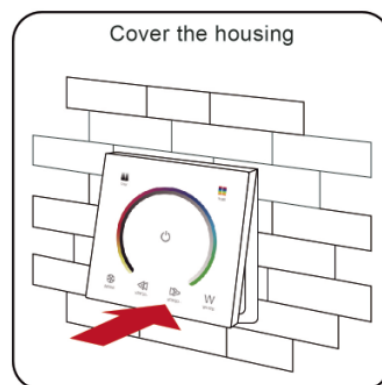
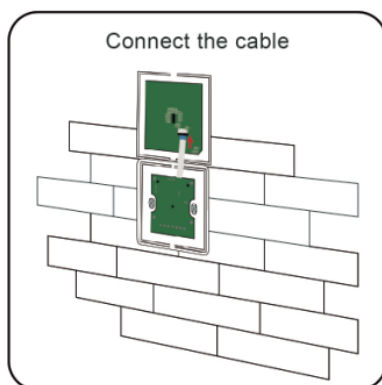
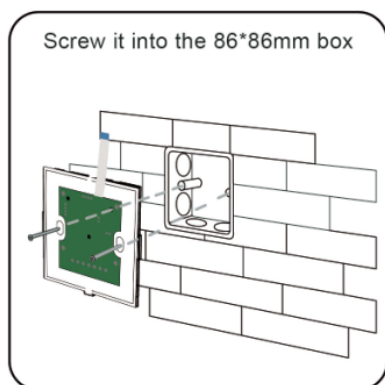
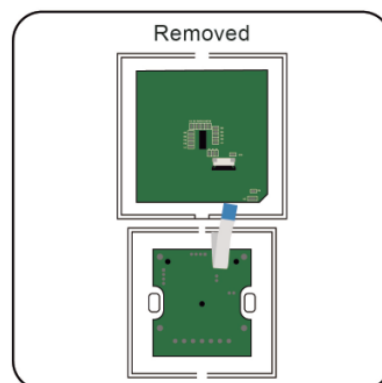
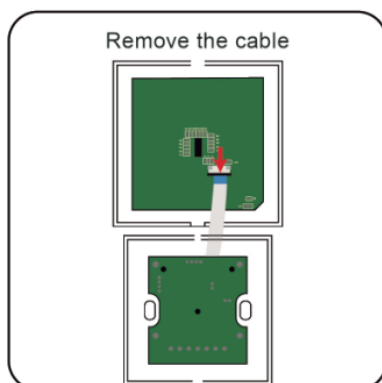
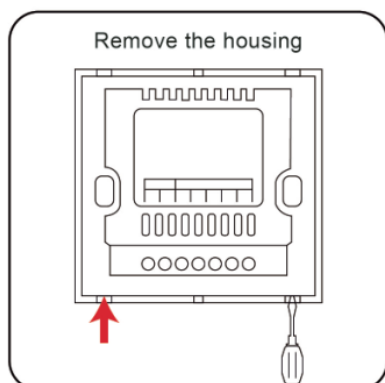
Mode No.	Function	Remark
1	Warm Color Gradual Fade	Brightness is not adjustable, Speed is adjustable
2	Cold Color Gradual Fade	
3	Warm Color& Cold Color Alternate Fade	
4	Warm Color Strobe Flash	
5	Cold Color Strobe Flash	
6	Alternate Stroboscopic	
7	Automatic Mode	

Typical Applications:



Installation Method:

Installation/Dismantlement



Cautions:

- 1、 This products Input voltage is DC12-24V, other input voltage are not allowed.
- 2、 Lead wire should be connected correctly, according to the wire color and the connecting diagram offers.
- 3、 Overload are prohibited.